

2016 CALIFORNIA GRANGE EXPO

HANDBOOK



“To preserve and bring together for exhibition, at proper seasons, the choicest products of orchard, farm, garden, dairy and household skill, that we may incite one another to good works.”

**141st ANNUAL CALIFORNIA STATE GRANGE MEETING
JUNE 23-26, 2016
ORANGEVALE GRANGE, ORANGEVALE, CA**

**Entries Close: May 31, 2016
Exhibits Receiving: June 23, 2016
9AM -5PM - receiving closes promptly at 5:00 PM with judging to follow
Entry Release: June 26, 2016**

Revised 4/27/2016

Copies of the 2016 Grange Expo Handbook may be obtained from the California State Grange. This book is available as a downloadable file by visiting the California State Grange Web Site www.CAStategrange.org

GRANGE EXPOSITION COMMITTEE

Chief Executive Officer

Ed Komski, Master California State Grange

Board of Directors

Inger Bevans, Lillian Booth, Robert Clouse, Bud Hill, Johnny Squire

Expo Coordinator/Registrar -- Katie Squire

1304 N. Joaquin St., Coalinga, CA 93210

Welcome to the 2016 California Grange Expo

The California Grange Expo brings together all of the Grange contests to make it easier for you, our members and friends, to participate in and support the Grange. This book is for Grange and Junior Grange members of all ages as well as prospective members within the community. Use the Exposition to introduce the Grange to other people. Consider offering workshops or classes at your Grange Hall or meeting place that could result in entries for these contests. Invite experts to introduce new techniques or skills of interest to your members and the community. Hold your own local Exposition to increase the visibility of your Grange in the community.

Separate Divisions are listed for Juniors (4 1/2-13 inclusive) and Youth (14-20) as well as Senior (21+) exhibitors. The age of an entrant, unless otherwise stated, is based on the participant's age on 1/1/2016. The exhibitor will select the appropriate Section for their participation. The same class numbers are used in each age section.

Pre-registration of entries is required so that the check-in process will be smooth and easy for everyone involved.

The California State Grange and the California Grange Expo are not responsible for errors on entry forms. No exhibitor shall be entitled to an award that has been disallowed as a result of his/her own error. Entries not meeting contest rules, including labeling, will be disqualified and excluded from awards.

Entries must be the work of the exhibitor and completed during the contest year. With the exception of classes using recycled items, materials should be new. Work should be clean and in good repair.

Decisions of the judges as recorded on the judging sheets are final. To encourage high standards the judges shall place exhibits based on merit. Judges may withhold placings as they see fit. Best of Show awards will be awarded at the judge's discretion to superior exhibits.

It is important for exhibitors, GYF advisors, and members to be familiar with the rules under which these contests are held. If you have questions regarding the application of rules, qualification of entries or exhibitors please contact the appropriate Department Director. You may also contact the Registrar at (559) 935-0926 or by email at bigfarmr@inreach.com

Entry Forms must be postmarked (unless otherwise noted) By: May 31, 2016

2016 California Grange Expo

Registrar

1304 N. Joaquin St.

Coalinga, CA 93210



2016 RULES

- 1) Grange Exhibitors must be a Patron in Good Standing.
- 2) Non-Grange members may exhibit in California sponsored classes as a Guest Exhibitor only one time. A Patron in Good Standing from a Grange in California must also sign the entry as the sponsor for each Guest Exhibitor.
- 3) Entries received from exhibitors who are members of or are sponsored by Granges that have been suspended will not be accepted.
- 4) Advance Registration is required.
- 5) A **maximum** of 2 entries per exhibitor will be allowed in any class.
- 6) Substitution of exhibits will only be allowed within the same class, and by the same exhibitor.
- 7) Exhibits must have been completed after October 20, 2012 to be eligible for entry in this show. Exhibits shown in an earlier Grange contest may not be reentered in the California Grange Expo.
- 8) Entries made from a kit will only be accepted in classes where the use of kits is allowed.
- 9) Exhibits may be entered in only one class. If an entry fits into more than one class or contest it is up to the exhibitor to select the class in which the entry best fits.
- 10) Exhibits entered in the wrong class will be disqualified.
- 11) Guest Exhibitors may only exhibit for one year. Grange membership must be confirmed in order to continue competing. .
- 12) All entries must be submitted using the Official California Grange Expo Entry Form located at the end of this book or electronically.

SPECIAL FOR 2016

National Junior Grange Contests: *Junior Grange Growing Across the Nation* is the theme for this year's contests. Choose from Creative Writing, Public Speaking, Scrapbooks, and Photography as a way to communicate your take on this theme.

NEW: Wacky or Crazy Cake – make a snack cake that does not have eggs or milk products in it. Mixed in the pan it is baked in and leavened with vinegar and baking soda. It sounds crazy but it is delicious. Listed in Baking Division 153.

NEW: National Grange One Act Play Contest. Here is your chance to create a new short skit or play to be presented by Grangers and for Grangers. Check out the Creative Writing section page 4-5.

Definitions

- ☞ **Amateur:** A person who engages in an event or activity as a pastime rather than a profession.
- ☞ **Professional:** A person who engages in an event or activity as a livelihood rather than as a hobby.
- ☞ **Group:** More than one person working together on a project, exhibit or entry.
- ☞ **Patron in Good Standing:** A Grange member who is not in arrears for dues, against whom no charges are pending, and who belongs to a California Grange in Good Standing.
- ☞ **Section:** Age classifications.
- ☞ **Junior:** Classes for ages 4 1/2 to 14 (age determined as of January 1, 2016).
- ☞ **Youth:** Classes for ages 14 to 20 inclusive.
- ☞ **Senior:** Classes for ages 21+.
- ☞ **Adult:** Classes for ages 14+
- ☞ **Open:** Classes in which all ages compete without separate Sections for each age group.
- ☞ **Entry Deadline:** The date when entry forms must be received.
- ☞ **Entry/Entries:** An object or collection of objects intended for exhibit.
- ☞ **Entry Form:** The paper work or digital form required for entering a contest.
- ☞ **Entry Label:** The identification form required to be attached to any entry
- ☞ **Entry Receiving:** The date and time, and location for the receiving of items for judging.
- ☞ **Exhibitor:** The person who produced the entry and owner of the exhibit.
- ☞ **Guest Exhibitor:** A participant who is not, nor has ever been a member of the Grange. Guest Exhibitors may only exhibit for one contest year and must join a Grange to participate subsequently

Judging Systems

American: A method of judging in which entries are ranked against each other and the best entries are selected for placing. Normally, only a single 1st, 2nd, and 3rd place award in the class will be awarded.

Danish: A method of judging in which entries are compared to a scorecard or standard. As many first placing, etc. as merited will be given.

ART

2-D ART

Division 10 FINE ARTS

Entries in classes must be completed after October 20, 2012 and be the original work of the exhibitor. **Maximum size 24" x 36" including frame**, no minimum size. Entries will be judged according to the medium used. Charcoal, Pencil, and Pastel entries must have been treated for permanency to stop smudging. Entries must be framed or have a firm backing. **Appropriate hanging devices or wires are required.** Glass covering is not allowed on any entry, Plexiglas and other non-breakable coverings are acceptable. Computer enhancement of artwork, or art generated by using computer printers is not permitted in these classes. No nudes.

Section A1	Junior, 7 & Under
Section A2	Junior, 8 to 10
Section A3	Junior, 11-14
Section B	Youth
Section C	Senior

Class 1	Painting
Class 2	Drawing
Class 3	Other

NATIONAL GRANGE JUNIOR CREATIVE ART CONTEST

Division 12 NG JUNIOR CREATIVE ART CONTEST

Use this year's theme to draw or paint a picture showing what the themes means to you. Use crayons, colored pencils, markers, or paints. Maximum size 8 ½ X 11" in size. State awards will be given. All entries in this contest will be submitted for judging at the National Grange Junior Creative Art Contest. Ages as of January 1. On the back of the artwork place a label with contestant's name, birth date, address, Grange name and number.

Section A1	Junior (7 and Under)
Section A2	Junior (8-10)
Section A3	Junior (11-14)



Class 1	Junior Grange Growing Across the Nation.
---------	--

GRAPHIC ARTS – 3D ART

Division 15 BANNERS & POSTERS

Banners must be made out of cloth. Materials mounted on the banner must be securely attached. Please include a hanging rod. Posters in this contest must be no larger than 36" wide by 36" long. Entries shall be hand drawn, painted, or constructed on poster board. **Computer generated posters must be entered in the Technology Divisions.**

Section A1	Junior, 9 & Under
Section A2	Junior, 10 to 13 inclusive
Section B	Youth
Section C	Senior

Class 1	Banner promoting Grange
Class 3	Poster promoting Grange
Class 4	Poster, any other



Division 20

Section A1	Junior, 9 & Under
Section A2	Junior, 10 to 13 inclusive
Section B	Youth
Section C	Senior

Class 1	Ceramics
Class 2	Metal
Class 3	Any Other Kind

ARTISAN CRAFTS

Junior, 9 & Under
Junior, 10 to 13 inclusive
Youth
Senior

CRAFTS

Division 30

CHRISTMAS TREE ORNAMENT

Maximum size 6 inches. Must include a hanging device.

Section A	Junior
Section B	Youth
Section C	Senior

Class 1	Fabric/fiber/yarn/thread
Class 2	Natural Materials
Class 3	Any Other Kind



Division 33

GENERAL CRAFTS

Section A	Junior
Section B	Youth
Section C	Senior

Class 1	Recycled craft item,
Class 2	Basket, lined
Class 3	Natural Objects
Class 4	Any Other Craft item

CREATIVE WRITING

Division 40

CREATIVE WRITING

Section A1	Junior 7 & under (max. 2 pages)
Section A2	Junior 8-10 (min. 3 pages double spaced)
Section A3	Junior 11-14 (min. 4 pages double spaced)
Section B	Youth
Section C	Senior
Class 1	What you would like to grow
Class 2	Any other writing

***Junior entries in Class 1 will also be submitted for judging in the National Grange Junior Creative Writing Contest. Juniors 7 years of age and under (Section A1) may dictate their entries for this competition. Write a story about what you would like to grow and who would help you. Entries must be double spaced, typed or hand-written on 8 ½ x 11 paper.** On the top center of the paper, place name, birth date, Junior Grange and number.

Division 45

NATIONAL GRANGE ONE ACT PLAY

One Act Plays must be no more than 15 minutes in length and no shorter than 10 minutes. Individual or writing teams can participate. No writer can be solely or part of a group that submits more than two plays per Section. At least one member of a writing team must be a Member in Good Standing. Plays must be primarily in English or be easily understood by an English-only speaking audience. All entries must be new material and cannot have been produced. All plays must be able to be performed in a Grange Hall (without a stage). All plays should be "Junior Grange friendly", so please use common sense regarding subject matter and language. Plays must have at least two and no more than seven characters and no monologues. Musicals will not be accepted. Scripts sent to the National Grange will not be returned.

Section D	Open
Class 1	Themed Play – Rural Life
Class 2	Open Topic
Class 3	Children's Play (At least 2 main characters are 13 or less)

Entries for the National Grange contest must be sent to the National Lecturer by mail, postmarked by August 12, 2016. A \$10 entry fee is required per script. For complete rules, <http://www.nationalgrange.org/wp-content/uploads/2016/02/2016-17OneActPlayContestInfo.pdf>

FLORICULTURE

Division 50 ARRANGEMENTS AND CENTERPIECES
Exhibits made using fresh, dry, natural, artificial or silk flowers. Not to exceed 24" in any direction or as noted.

Section A	Junior
Section B	Youth
Section C	Senior

Class 1	Table arrangement (Max. size 6 x 12)
Class 2	Baskets
Class 3	Holiday
Class 4	Any other kind



Division 56 POTTED PLANTS
Plants should be well watered, but not dripping when presented for competition. Please include a foam plate or plastic drip saucer for your entry. Actual plants must be submitted for judging.

Section A	Junior
Section B	Youth
Section C	Senior

Class 1	Foliage Plants
Class 2	Flowering Plants
Class 3	Any other Kind

HEALTH & SAFETY AWARENESS SIGN-A-SONG

Participants must be Grange members. Signers must use total communication skills (Sign Language (ASL preferred), facial expression, mouthing words for lip reading, finger spelling if appropriate, and body movement) to interpret a single song of their choice. Props, and costumes are not allowed in this contest, rhythm is optional. Anyone who is a professional instructor, or who receives money for signing may only enter as an Expert. A hobbyist is anyone who signs on an occasional basis and strictly for fun, this class also includes someone who has entered the sign-a-song contest for more than two years. Exhibitors will submit 3 copies of the words being signed for the use of the judges. Exhibitors must provide their own music. A CD player and speakers will be available. Participants must sign their own name and song title. The audience and judges must be informed as to which sign language is used. Only one song may be signed during the competition performance. Top winners in each Open class are invited to compete at the Western Regional Conference. If a professional signer is part of a group, it is only eligible in the Expert category. Experts are not eligible for Best of Show in the Regional competition.

Division 60	SIGN-A-SONG CONTEST
Section A	Junior
Class 1	Age 11-14 Individual
Class 2	Age 11-14 Group
Section D	Open (14+ years of age)
Class 1	Novice
Class 2	Hobbyist
Class 3	Group
Class 4	Expert



One Junior Grange individual or group will be selected to represent California. The National Junior Grange Sign-A-Song Contest will be held on Friday morning of the National Grange Session. This will be open to all State Junior Grange Sign-A-Song Individual and Group Winners, ages 9 to 14, and will be judged at the National Session. Winners will be announced at the Evening of Excellence and will perform their song at the Junior Grange Breakfast on Saturday morning.

HORIZON LEADERSHIP RECOGNITION PROGRAM

The Horizon Leadership Recognition Program provides an opportunity for Youth, Young Adults, and Young Couples to represent our State at a National Convention the year following their selection as the state award recipient. They will have the chance to build their individual leadership potential, broaden their view of the Grange, receive training to use in their own states and build friendships across the nation.

Youth Ambassadors must be 16-21, Young Adults must be between ages 22-36.

For complete rules see the National Grange 2016 Youth Program Guide. Official Application forms must be completed and submitted by September 1, 2016 to National Grange Youth Director. <http://nationalgrangeyouth.org/>

HORTICULTURE

Division 70 HORTICULTURAL IDENTIFICATION AND JUDGING

Open to Grange teams consisting of 3 to 4 individuals aged 14-20. **Grange membership is required.**

The production, marketing, and buying of fruit, vegetable, flower, and ornamental crops requires detail knowledge of many subject matter disciplines. This contest is a training program concerned with teaching youth to recognize and identify some of the most important horticultural crops, to learn criteria influencing quality and to be able to answer questions and solve problems relating to the art and science of horticulture.

For contest rules and information <http://nationalgrangeyouth.org/national-junior-horticultural-association-njha/> For deadlines go to www.njha.org.

No competitions are held for live animals during the California Grange Expo. Members raising animal projects are encouraged to submit Grange Youth Fair Project books in Division 100 & 105 of the Grange Members in Action Department. We encourage you to enter the results of projects related to your animal projects. For example if you have a Dairy Goat project you might submit a Gift Basket of different soaps made from Goat milk in the Gift Basket competition found in Home Arts. A Swine project member could present an album documenting the construction of a farrowing crate in Ag Mechanics.

GRANGE MEMBERS IN ACTION

PARLIAMENTARY PROCEDURE

Division 80 Parliamentary Procedure Contest

Demonstrate knowledge of parliamentary rules. Conduct a Grange business meeting effectively. Present a logical, realistic, and convincing debate on motions. Record complete and accurate minutes and memorize the opening and closing ceremonies. Teams will consist of Master, Overseer, Steward, Gatekeeper, Chaplain, and Secretary. All members of the team must be Grange members. The contest will include a 45 minute written examination, oral questions, as well as the Opening Ceremony, Business, and Closing. No drill work is required. Teams will use the most current Subordinate Grange Manual.

Section D Open

Class 1	Youth only (14-35)
Class 2	Mixed ages

Team members do not need to be from the same Grange or Pomona. For specific rules and guidelines please go to www.nationalgrangeyouth.org

GRANGE YOUTH FAIR TEAM AWARDS

Division 100 GRANGE YOUTH FAIR AWARDS

Submit a record book documenting your participation in the program. Neatness and completeness of the record book is crucial to achieving this award. Include full records for breeding projects. Entrants in Horticulture (including Agriculture, Horticulture and Floriculture) will include information from germination to harvest; these entries can be exhibited as either living exhibits or as a finished product. All activity within the scope of the project will be considered. **Please use the report forms located in the [GYF Program Handbook](#) for each Record Book to indicate entry in the appropriate class. In the Record book use the Exhibitor Awards form as a cover sheet.** All books will be judged using the Danish system.

Section A Junior (5 to 13 years of age) Section B Senior (Youth ages 14 - 19)

Class 1	Large Livestock
Class 2	Small Livestock
Class 3	Equestrian Project
Class 4	Breeding Project
Class 5	Dairy
Class 6	Horticulture
Class 7	Home Arts & General Exhibits
Class 8	Small Animals

Division 105 GYF BEST ALL AROUND EXHIBITOR

The Project Record Book must include the fair/exhibit results for entries in two or more major categories (i.e.: Large & Small Livestock; Home Arts; Horticulture & Floriculture; Fine Arts & Photography; Industrial Arts & Technology).

Section A Junior (5 to 13 years of age) Section B Senior (Youth ages 14 - 19)

Class 1	Best All Around
---------	-----------------

NATIONAL GRANGE YOUTH ACHIEVEMENT AWARDS

Grange Members of all ages are encouraged to apply for [Achievement Awards](#) from the National Grange. Named after the Founders of the Grange each award places emphasis on activities that contribute to youth leadership skills. Recognition is given for activities at the local, state and national levels as well as increasing responsibility. See the National Grange 2016 Grange Youth Program Guide for additional information.

PUBLIC RELATIONS

Division 110 GRANGE COMMERCIAL

Entries in this section may be created by an individual or group of any age. Submit a written copy of the script and an audio or video tape. Maximum length 60 seconds for classes 1 & 2. Commercial may address any aspect of the Grange or its programs. Be creative, use props and costumes or audio effects.

Section D	Open
Class 1	Television
Class 2	Podcast or YouTube



Division 115 FOLDING DISPLAY CONTEST

Displays must be Grange related and may be made by individuals or groups. All members of groups must be in the same age section. Display should be no larger than 3' x 4' and should be able to stand by itself. The top entry from Section B1 and B2 will be exhibited at the National Grange Session.

Section A	Junior (5 to 14)
Section B1	Youth (ages 14 - 21)
Section B2	Young Adult (ages 22 - 35)
Section C	Senior (36+)

Class 1	Folding Display
---------	-----------------



MEMORIES

COLLECTIONS

A collection is a group of 10 to 20 related items. Items may be related by type, characteristics, or theme. Exact duplications of items within a collection are not allowed. Display cases will **NOT** be provided. The exhibitor should provide accurate identification, if necessary, for the items included in the collection. Maximum size for display is 24" x 46". It is highly recommended that collections not displayed in a case be securely attached to a backing for transport and display.

Division 120	COLLECTIONS
Section A	Junior
Section B	Youth
Section C	Senior
Class 1	Any Kind



SCRAPBOOKS

Division 125 SCRAPBOOK

Capture the activities of you as a Junior Grange or Grange member. What did you do? Where did you go? What did you make? What did you participate in? This is your Grange journey. Juniors, please use the theme: Junior Grange Growing Across the Nation!

Section A1	Junior, 7 & Under
Section A2	Junior, 8 - 10
Section A3	Junior 11 -14
Section B	Youth
Section C	Senior
Class 1	My Grange Year

Junior Grange scrapbook pages must be 8 ½ by 11 inches and a maximum of 10 pages. Each Junior scrapbook must include a cover sheet with contestant's name, birth date, address, Grange name and number. **Junior entries will be submitted to the National Grange for inclusion at the National Grange session in November.**

Division 126 DIGITAL SCRAPBOOK

Capture the activities of you as a Junior Grange member. What did you do? Where did you go? What did you make? What did you participate in? This is your Grange journey. Use the theme: Junior Grange Growing Across the Nation!

Section A1	Junior, 7 & Under
Section A2	Junior, 8 - 10
Section A3	Junior 11 -14

HOME ARTS

BAKING

ALL Baking and Candy entries must be placed on a foam tray or plate and enclosed in a zipper style resealable plastic bag. Entries not meeting these requirements will be disqualified. Submit a complete recipe printed on a 3" x 5" card, listing all ingredients with each exhibit.

Division 150 QUICK BREAD - Non-yeast breads

Section A	Junior
Section B	Youth
Section C	Senior

Class 1	Loaf
Class 2	Muffin (7)
Class 3	Any other kind, specify

Division 151 YEAST BREAD

Section A	Junior
Section B	Youth
Section C	Senior

Class 1	Loaf - Any Kind
Class 2	Loaf - Any Kind, machine made
Class 3	Rolls (7 individual)

Division 152 COOKIE (14 cookies) **Non-baked cookies are not eligible in this division**

Section A	Junior
Section B	Youth
Section C	Adult

Class 1	Bar
Class 2	Drop



Class 3	Filled
Class 4	Rolled
Class 5	Brownies
Class 6	Any other kind

Division 153 WACKY or CRAZY CAKE

Wacky or Crazy Cake is a snack cake mixed in the pan it is baked in. These cakes have no eggs or dairy products in them and use the reaction of baking soda and vinegar to create a light airy cake. Peg Bracken called it Cockeyed Cake in the "I Hate to Cook Book". It has become an internet favorite with many variations.

Section A	Junior
Section B	Youth
Section C	Senior

Class 1	Wacky Cake - Any Kind
---------	-----------------------

CONFECTIONS

Entries in this category will not be returned due to the perishable nature of the product. **Please note: Dehydration has been moved to a separate contest in Food Preservation**

Division 160 CANDY (10 Pieces)

Section A	Junior
Section B	Youth
Section C	Senior

Class 1	Hard - any kind
Class 2	Soft - any kind
Class 3	Chocolate



Division 170 SNACKS (flavored popcorn, crackers, etc.) (Minimum amount pint size bag)

Section A	Junior
Section B	Youth
Section C	Senior

Class 1	Any Kind
Class 2	Non-baked cookies

FOOD PRESERVATION

ENTRY RULES

- All entries must have been canned after September 1, 2009
- All jars must be STANDARD and SEALED. Use of paraffin or use of other than standard jars will disqualify exhibit. A STANDARD JAR is a container specifically designed for canning. Due to limitations on exhibit space, it is highly recommended that 1/2 and 1 pint jars be used. Larger jars may be used only where appropriate for the type of food, i.e. asparagus.
- Exhibits may be opened for judging. Opened jars will be returned. Exhibits are not refrigerated.
- Each exhibit must be labeled with the following: date of processing, complete list of ingredients, Method of processing, and type of fill used (hot pack, cold pack).** Only one jar is needed for judging.
- The current edition of the Ball Blue Book and USDA guidelines will be considered the guides for all food preservation entries.
- Please note on the label if the product is Low Calorie, Low Carbohydrate, Low Sodium, or for a Special Diet.

Division 180**FRUIT**

Section A
Section B
Section C

Junior
Youth
Senior

Class 1	Fruit – whole or pieces
Class 2	Sauce
Class 3	Juice
Class 4	Any Other Kind

Division 182**VEGETABLES**

Section A
Section B
Section C

Junior
Youth
Senior

Class 1	Beans
Class 2	Tomatoes
Class 3	Vegetables
Class 4	Any Other Kind

**Division 184****PICKLED FOODS**

Section A
Section B
Section C

Junior
Youth
Senior

Class 1	Cucumber
Class 2	Fruit or Vegetable
Class 3	Mixed
Class 4	Olives
Class 5	Relish
Class 6	Any other kind

Division 185**JAM**

Section A
Section B
Section C

Junior
Youth
Senior

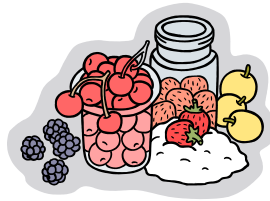
Class 1	Berry
Class 2	Strawberry
Class 3	Mixed Fruit
Class 4	Any Other Kind

Division 186**JELLY**

Section A
Section B
Section C

Junior
Youth
Senior

Class 1	Berry
Class 2	Grape
Class 3	Strawberry
Class 4	Mixed Fruit
Class 5	Any other kind

**Division 187****OTHER SOFT SPREADS**

Section A
Section B
Section C

Junior
Youth
Senior

Class 1	Marmalade
Class 2	Fruit Butter
Class 3	Conserve
Class 4	Any Other, describe

Division 188**CANNED AND BOTTLED LIQUIDS**

Entries in this competition must be presented in sealed or firmly stoppered, glass containers.

Section A
Section B
Section C

Junior
Youth
Senior

Class 1	Juice or beverage
Class 2	Syrup or Topping
Class 3	Vinegar
Class 4	Any Other, describe
Class 5	Low Cal, Low Carb, or Special Diet

For more information: about the food preservation visit the Jarden website at www.homecanning.com

Division 190**DRIED FOODS - 1 pint zip bags**

Please note: fruit leather should be entered in Div. 160.

Section A
Section B
Section C

Junior
Youth
Senior

Class 1	Fruit,
Class 2	Herbs
Class 3	Jerky, describe
Class 4	Raisins
Class 5	Vegetables
Class 6	Any other, describe

Division 200**GIFT PACK**

Exhibits in "Home Canning" must use at least 4 varieties of food SEALED in 1/2 pint or pint jars. Entries in "Any Other Food" will contain at least 4 separate items of food, i.e. vinegar, dehydrated foods, or baked goods presented in appropriate packaging with labeling. Entries in "For the Home" must have at least 4 separate home prepared gift items appropriate for use in the home, i.e. bath crystals, decorated towels, napkin rings and napkins (Matched sets will be counted as one item). Gift Packs will be judged on attractiveness and originality. Canned goods will not be opened for judging, nor foods tasted. At least 75% of gift pack must be homemade. Commercial products included in gift pack may not exceed 25% or total contents.

Division 200**GIFT PACK**

Section A
Section B
Section C

Junior
Youth
Senior

Class 1	Home Canning
Class 2	Any Other Food
Class 3	For the Home
Class 4	Any other kind



shutterstock · 65664193

TEXTILES**Division 210****NEEDLEARTS - Handwork**

Section A
Section B
Section C

Junior
Youth
Senior

Cotton Thread - Hand Crochet, Knit or Tat

Class 1	Large item
Class 2	Small item (less than 14")
Class 3	Clothing item
Class 4	Any Other, specify



Yarn - Hand Crochet, Knit or Tat

- Class 5 Afghan
- Class 6 Baby Blanket
- Class 7 Baby Set
- Class 8 Cap, Hat or Scarf
- Class 9 Sweater, adult or child
- Class 10 Any other, specify

Needlework - Any Other Thread or Yarn

- Class 11 Embroidery or Crewelwork
- Class 12 Counted Cross Stitch (any item)
- Class 13 Needlepoint/plastic canvas
- Class 14 Latch Hook (any item)
- Class 15 Any Other, Made from a kit
- Class 16 Any Other, specify

Division 220

QUILTS AND COMFORTERS

- Section A
- Section B
- Section C

- Junior
- Youth
- Senior



- Class 1 Baby Quilt, crib size
- Class 2 Comforter, tied
- Class 3 Quilt, hand quilted
- Class 4 Quilt, machine quilted
- Class 5 Quilt, made by a group
- Class 6 Wall hanging or throw, hand quilted
- Class 7 Any other quilted item

Division 225

NATIONAL GRANGE QUILTED ITEM

The National Grange Quilt block contest is one key to help us share the celebration of the 150th Anniversary of the National Grange in 2017. Entries are due to the National Lecturer by September 30, 2016. http://www.nationalgrange.org/wp-content/uploads/2016/03/2016QUILTED_ITEM_CONTEST.pdf

GROUP I

Adult

Section 1

Fabric Unfinished Quilt Block

Dresden Plate pattern – 16 1/2" x 16 1/2"
Made in blue and golds. [Pattern](#)

Section 2

Finished Fabric Quilted Items

- Class A Table runner – maximum 18" x 60"
- Class B Finished quilted pillow – maximum 18"x 18"
- Class C Quilted Wall Hanging – maximum 48"x48"
- Class D Quilted Coffee Cozy
- Class E Quilted Crib/Baby Quilt – maximum 45"x54"

GROUP II

Junior

Section 1

Fabric Unfinished Quilt Block

Log Cabin pattern – 12 1/2' x 12 1/2"
Made in red, white, and black [Pattern](#)

Section 2

Quilted Potholder

All entries sent to the National Grange will be retained by the National Grange to be displayed at the Quilt Show associated the 151st Annual National Grange Convention in Spokane, WA in November 2017. All items will be on display and for sale during the event. Funds raised will go the Grange Foundation, a 501(c)(3) nonprofit entity.

Division 230 TECHNIQUES

WEAVING, MISCELLANEOUS OR MIXED

- Section A
- Section B
- Section C

- Junior
- Youth
- Senior

- Class 1 Weaving
- Class 2 Machine Embroidery
- Class 3 Machine Knit
- Class 4 Hand spun fibers
- Class 5 Any Other Kind, specify

Division 240

SEWING - Clothing Construction

- Section A
- Section B
- Section C

- Junior
- Youth
- Senior

- Class 1 Blouse or shirt
- Class 2 Coordinated outfit, 2-3 piece
- Class 3 Dress
- Class 4 Jacket or Coat
- Class 5 Pants or shorts
- Class 6 Skirt
- Class 7 Any other garment, describe



Division 250

SEWING - Household creations

- Section A
- Section B
- Section C

- Junior
- Youth
- Senior

- Class 1 Apron
- Class 2 Accessories
- Class 5 Any other item, specify

Division 260 STUFFED TOYS

No commercial doll parts accepted; must be handmade. Dolls must be dressed in custom made clothing. Maximum size 24"x24"x24"

- Section A
- Section B
- Section C

- Junior
- Youth
- Senior

- Class 1 Animal
- Class 2 Doll
- Class 3 Any other kind



Granges are encouraged to make toys to give to your local children's homes, hospitals, special education schools, and fire and police departments for the use of children. Make sure to attach a tag which reads "This toy was made for you with love by *Your Grange*."

Division 270

WEARABLE ART

Decoration may be on any handmade or purchased article. Judged strictly on beauty and originality.

- Section A
- Section B
- Section C

- Junior
- Youth
- Senior

- Class 1 Appliqué, Patchwork, or Pieced
- Class 2 Beaded
- Class 3 Dyed
- Class 4 Embroidered
- Class 5 Painted, Stenciled
- Class 6 Quilted
- Class 7 Any other, specify



MISCELLANEOUS

Division 300

MISCELLANEOUS PROJECTS

- Section A
- Section B
- Section C

- Junior
- Youth
- Senior

- Class 1 Any other – please specify

NATURAL SCIENCES

AGRICULTURE

Exhibits should be full mature or ripe and properly cleaned. Bulk entries must be shown in a clear 1-pint container, unsealed. Bundles and sheaves should be mature and cured, not less than 2" in diameter at the bottom tie. Entries must have been grown and prepared by the exhibitor. Entries should be grown for normal home use. Monstrosities (extremely oversize, or unnaturally grown) will not be considered for awards. **All entries must be identified by species and variety on the entry form, please note organic produce.**

Division 310 FIELD CROPS & GARDEN SEED

Section A	Junior
Section B	Youth
Section C	Senior
Class 1	Bulk seed, any variety
Class 2	Grain, Sheaves
Class 3	Dried Flowers or Sunflower
Class 4	Any Other

Division 312 VEGETABLES - plate display

Section A	Junior
Section B	Youth
Section C	Senior
Class 1	Beans (12 pods)
Class 2	Corn, fresh (5 ears)
Class 3	Tomatoes (5)
Class 4	Squash, summer (3)
Class 5	Any other, identify

Division 314 FRUIT - plate display

Section A	Junior
Section B	Youth
Section C	Senior
Class 1	Berries (1 dry pint)
Class 2	Stone Fruit (5)
Class 3	Any other fruit (5)



Division 316 NUTS - plate display 1 lb. unshelled

Section A	Junior
Section B	Youth
Section C	Senior
Class 1	Any Variety

Division 318 HONEY - 1 lb. jar

Section A	Junior
Section B	Youth
Section C	Senior
Class 1	Honey, any form

AGRICULTURAL FIBERS

Division 330 AGRICULTURAL FIBERS

Section A	Junior
Section B	Youth
Section C	Senior
Class 1	Wool Fleece
Class 2	Any Other Kind



PERFORMING ARTS

Evening of Excellence

Division 340	TALENT SHOWCASE
Section A	Youth (Age 14 & Under)
Section D	Adult
Class 1	Variety
Class 2	Vocal
Class 3	Instrumental

All performers at must be Grange or Junior Grange members. Performers in a group need not be members of the same Grange. Taped accompaniment for vocal acts must be instrumental only. No taped accompaniment for instrumental acts. Maximum time limit: Six Minutes, no minimum time.

Public Speaking Contest

This contest is open to members of the Grange and Junior Grange only. The contestant's age as of January 1, 2016 will determine the age group. First place winners in each class will be invited to present their speech at the Western Regional Youth Conference this summer

Division 350 JUNIOR GRANGE PUBLIC SPEAKING

Section A	Junior
Class 1	11-14 years of age

Deliver a prepared speech on the topic of "How the Junior Grange Can Grow Across the Nation" or any topic of your choice. Length Minimum 4 minutes - maximum 7 minutes.

Division 360 GRANGE PUBLIC SPEAKING

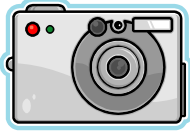
Section B	Youth 14-21 years of age
Section C1	Young Adult 22 - 35 years of age
Section C2	Adult 36+ years of age
Class 1	Prepared Speech
Class 2	Elevator Speech
Class 3	Radio Spot
Class 4	Impromptu

Class 1: Contestants will be required to answer an impromptu question related to the topic of the speech at the end of their speech. Topic: Contestant's Choice. **Time Limit: minimum 4 minutes – maximum 7 Minutes.**

Class 2: You've met someone in an elevator or been stopped in a restaurant and asked "What is the Grange" your task is to explain what the Grange is to this person in one and one-half minutes (**90 seconds**).

Class 3: Pretend you are a "DJ" and you're doing a live commercial for the Grange. You can include one or two people in the radio spot. Radio spots should be exactly 60 seconds in length and may include a musical or sound effect introduction or background. If music or sound effects are used the contestant must provide and operate the sound-making device. Contestants will provide a complete written script (including notations about music/sound effects) to the timekeeper to aid in timing accuracy. Music/sound effect introductions and endings are considered part of the radio spot and must not exceed the 60 second time limit. Radio spots should relate to the Grange, be original, and created by the contestant.

Class 4 Topics will be drawn by the contestants, no preparation time will be given. Time limit: **Maximum 7 minutes.**



PHOTOGRAPHY

Photographs may be entered in only one class; the exhibitor must select the class for the entry. Photos must be mounted for display in frames, mats or with a backing. Hanging devices must be firmly attached to the back of the entry (3 one inch pieces of hook sided, Hook and loop (Velcro) attached to the back of matted or backed photographs is suitable). Glass covered entries will not be accepted for judging. Size of entry including frame or backing must not be smaller than 5"x5" or larger than 16"x20". Only photos taken after 10/20/2012 are eligible for entry. Exhibits with digital captions must be entered in Computer Manipulated. Compositions must be composed of original photos taken by the exhibitor.

Division 370	PHOTOGRAPHY
Section A1	Junior, 7 & Under
Section A2	Junior, 8-11
Section A3	Junior, 11-14 inclusive
Section B	Youth
Section C	Senior
Class 1	Landscape/Seascape
Class 2	Portrait
Class 3	Macro – (close up detail)
Class 4	Animals
Class 5	Family
Class 6	Computer Manipulated Photographs
Class 7	Junior Grange Growing Across the Nation*

*Junior Entries in Class 7 are limited to a minimum of 5"x7" and a maximum of 8"x10" entries will be submitted to the National Grange for display and judging at the 150th Session in November 2016.

Division 375 NATIONAL GRANGE PHOTOGRAPHY CONTEST

Entries must be printed in 8x10 or 8x12 and matted in an 11x14 white mat (no frames).

Section A	Junior (5-14 years old)
Section D	Adult (14 years and up)
Class 1	Grange at Work
Class 2	Faith
Class 3	Community
Class 4	Family
Class 5	Tractors
Class 6	Young Love
Class 7	Rural Scene
Class 8	Democracy in Action

Entries need not be judged at Subordinate, Pomona, or State Granges, but are sent by individual members to the National Grange Lecturer. A member is limited to one photo at the National Grange.

TECHNOLOGY DEPARTMENT

AG MECHANICS & INDUSTRIAL TECHNOLOGY

Division 390 AG MECHANICS AND INDUSTRIAL TECHNOLOGY

Section A	Junior
Section B	Youth
Section C	Senior
Class 1	Large project album or display board
Class 2	Small project, 18" x 18" x 18" maximum

Class 1: Document the construction of a single large project (i.e.: farrowing crate, trailer, bar-b-que, hope chest, lamp, etc.). Include: plans; construction materials list; costs; provide at least 12 photographs of the project under construction; include detail photos (welds, joints, miters, etc.). If judged at a local fair include a copy of judging evaluation and comment form. Due to limitations of the display area completed projects cannot be accepted or displayed.

Class 2: Small projects: battery operated projects must include a full set of fully charged batteries. Electrical projects must have a method to stop the flow of current. Entries must be age appropriate. Include an explanation of how the project works and is used.



COMPUTER APPLICATIONS

COMPUTER DESIGN

Entries should be mounted or framed (no glass) for exhibition. Entries must be printed on 8 1/2" x 11" paper and may be printed in either portrait or landscape mode, may include a sample of final product. Entry must be computer generated and designed by the exhibitor.

Division 400 DESIGN

Section A
Section B
Section C

Class 1	Artwork - any type
Class 2	Grange flyer or brochure
Class 3	Grange Newsletter
Class 4	Grange Poster
Class 5	Letterhead for a Grange or officer
Class 6	Any other graphic design or set of plans

COMPUTER

Junior
Youth
Senior



COMPUTING - PowerPoint Presentation

Create a successful presentation that is appealing to an audience. Must include the following: Slides for visual effects (at least one 35 mm slide, black & white or color transparency or images displayed on a computer screen); Outline, including slide titles and text of bulleted items, must cover all key points; Notes, thumbnail or reduced size copies of visuals; Handouts, at least one handout must be included in your presentation. Submit in a 3-Ring binder. Use sheet protectors for your slides etc. Include disk copy of presentation. Exhibitor identification information on the first page in the binder. **No age groupings.**

Division 410 Section D

Class 1	Grange Presentation
Class 2	Any other presentation

POWERPOINT PRESENTATION

Open (any age)

COMPUTING - WEB PAGE DESIGN

Division 420 WEB PAGE DESIGN

Design a successful website. Web pages should be designed for easy access from most computer platforms and browsers. Website needs to include information about the Grange and activities. Content must be appropriate for all ages. **THE WEBSITE ADDRESS MUST BE INCLUDED ON THE ENTRY FORM.** Websites will be visited by judging panel in June prior to convention. Addresses will not be made public. **Amateur Exhibitors Only, exhibitor must be the individual who has built the website.**

Section D Open (any age)
Class 1 Web Page

HINTS: Sites should be easy to navigate with a design (backgrounds and themes) which is consistent throughout the site. You should be able to tell you are on the same website. **BIG TIP:** There should be no broken links **BIG TIP#2: PROOFREAD...** Pages full of spelling errors may convince your visitors to look elsewhere for information.



WOODWORKING

Entries in these class are limited in size to a maximum of 24" x 24 x 24". Exhibits in Classes 1 and 2 may be constructed from kits, or may be cut out by another person.

Division 430 Woodworking
Section A Junior
Section B Youth
Section C Senior

Class 1 Pre-cut,
Class 2 Self-cut,
Class 3 Machine carved
Class 4 Hand carved/whittled,
Class 5 Machine Turned (lathe)

ENTRY INSTRUCTIONS

The 2016 Grange Exposition Entry Form will only be accepted for entries, please feel free to copy this form.

Completely fill out the top of the entry form. Clearly print all information. Birthdate and age information is only required for Junior and Youth exhibitors. Make sure to sign your entry. Grange name and number and region name or number must be filled in. Guest Exhibitor entries must be signed by a sponsoring Grange member. Past exhibitors may include their exhibitor number from prior years. Entry confirmation will be provided by email address or self addressed stamped envelope.

List all items entered (regardless of receiving dates and department). Please make sure to keep a copy of your entry form(s).

For each exhibit make sure to list the correct Division number, Section (Age Group) and Class number. Item description can include titles for artwork and photography; variety or type for food entries (i.e. Kiwi Jam, Butter Cookies), or description of the actual entry (i.e.: Blue silk pantsuit, seed mosaic of new Grange Emblem). Please be sure to indicate any special awards that the entry may be qualified for in the appropriate column on the form.

If another person is transporting your exhibits to the Grange Exposition, be sure that each exhibit is well marked with a removable tag including your name, as well as Division, category and class entered. Bring a copy of the Entry Form for check in. Entry tags will be distributed at check in. This will aid everyone in the check-in process.

CALIFORNIA STATE GRANGE EXPOSITION 2016

ENTRY FORM

Entries Due May 31, 2016

Page ____ of ____
for multiple page entries

Please Print

EXHIBITOR NAME: _____

MEMBER

GRANGE _____

MAILING ADDRESS* _____

GUEST EXHIBITOR

GRANGE NUMBER _____

CITY _____ ZIP _____

BIRTHDATE** _____

REGION NUMBER _____

PHONE _____

AGE 1/1/2016 _____

EXHIBITOR # _____

FAX _____

Returning exhibitors use the same number each year.

EMAIL ADDRESS: _____ @ _____

**Personal mail address is required for each exhibitor. Group or Grange addresses will not be accepted*

Entrant Signature (required)

Grange Youth Fair Advisor/JG Leader/or Parent Signature**

**Required for Junior & Youth Exhibitors

Sponsoring member Signature for Guest Exhibitor

Information provided on this form is used only by the California State Grange and is not sold or transferred to any other organization.

ITEM DESCRIPTION / CAPTION	DIVISION	SECTION	CLASS	FOR STAFF USE ONLY		
				RECEIVED	AWARD	RELEASED
1						
2						
3						
4						
5						
6						
7						
8						
9						
10						
11						
12						
13						
14						
15						
16						
17						
18						
19						
20						



Send Entries to:
California Grange Exposition
Katie Squire, Director
1304 N. Joaquin St.
Coalinga, CA 93210